

# ABOUT NETCODE

## What is NetCode?

NetCode is the smart way to generate time-sensitive codes which can allow temporary access via the Codelocks API, the K3 Connect App or through the online NetCode portal. Codes can be created with a specific date, time and duration. Using time-sensitive codes is a more secure way to grant access as the code will not work outside a designated timeslot. Issue codes to visiting service engineers, delivery personnel and short/medium-term locker rental.

## Types of NetCode

Five types of NetCode are available\*:

- Short-term single-use codes  
Duration: 1 to 12 hours and 1 to 7 days
- Short-term multi-use codes  
Duration: 1 to 12 hours and 1 to 7 days
- Medium-term codes  
Duration: 1 to 21 days + 28 days
- Long-term codes  
Duration: Codes required for more than 28 days
- Codes that will expire on a particular date



NetCode's can be generated via the online portal or app from anywhere in the world. NetCodes are then sent via email or SMS to the end user who uses the six digit code to gain access. The lock does not need to be connected to the internet to grant access and you do not need to be near your lock to generate NetCodes, this allows you to offer access remotely on a global basis.

## Additional NetCode Features\*

### New NetCode Blocks Previous NetCode

This feature automatically blocks the last used NetCode when a new NetCode is entered.

### Personal User Code

Allow a NetCode user to create a personal 4 digit number that retains the same validity period as their originally located NetCode.

### Block a NetCode

Block a NetCode directly on the lock using either the Master Code or another valid NetCode.

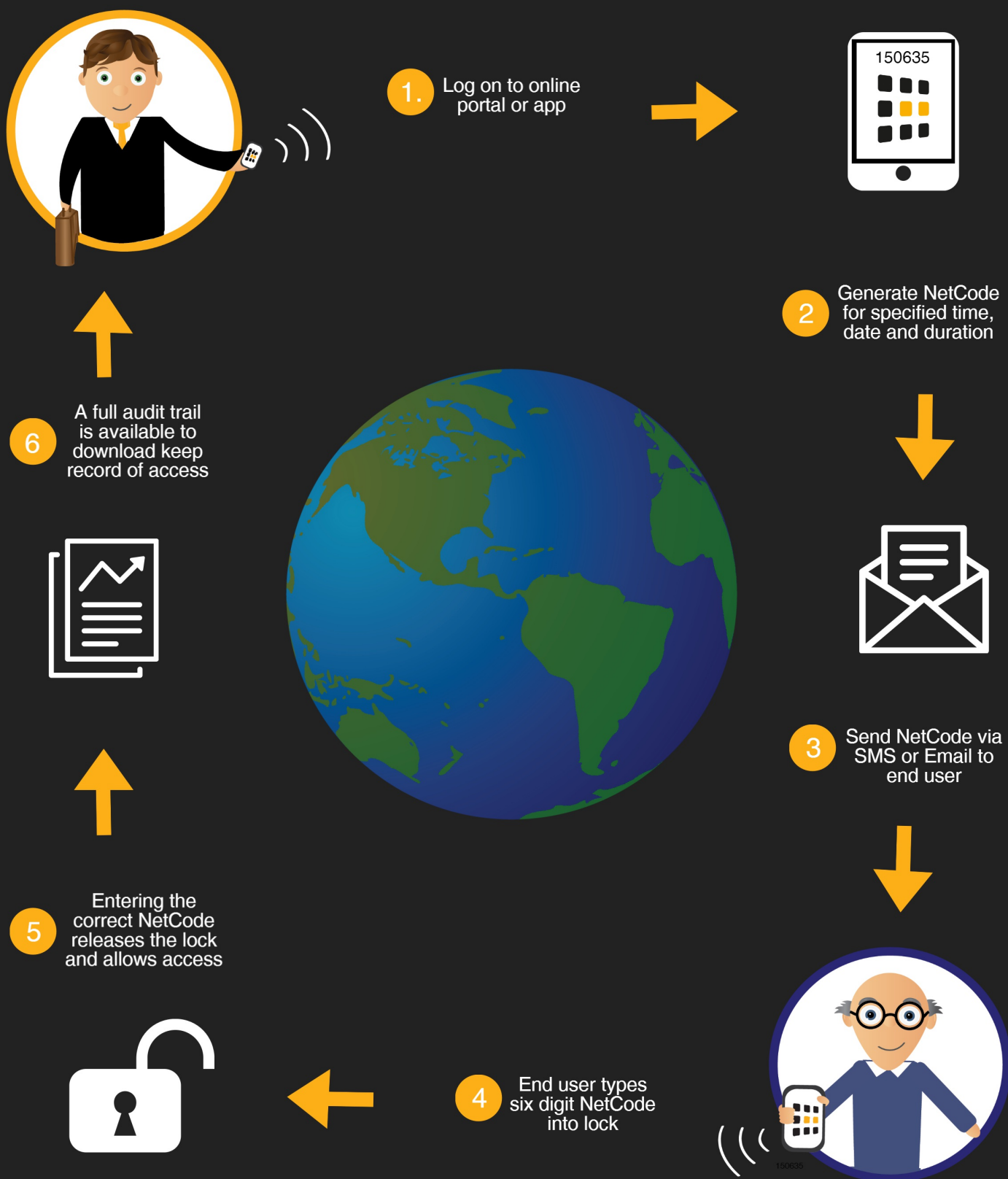
### Mode Restrictions

Choose which type of NetCode to support. This is a useful feature if the number of potentially available NetCodes needs to be reduced.

### Flexi NetCode

NetCodes operate from a specific date and time, however with the feature you can set a grace period of up to 15 minutes either side of the NetCode time set. This is useful for bookings to allow a little flexibility on the code time period.

# NetCode Storyboard



## Our products use **NetCode**



The KL1060 uses NetCodes as a secure way to grant access as the code will not work outside a designated timeslot. Issue codes to visiting service engineers, delivery personnel (drop boxes), and short/medium-term locker rental. Generated codes can be sent by email or SMS.



The new SMART Lock CL5510 makes access control easier, offering flexibility and convenience by providing a range of entry methods including the use of pushbutton code, smart card or smartphone basis.

It utilises wireless technology to give building managers the ability to program locks via a smartphone, generate and send entry codes for easy access and issue smart cards for alternative entry.



Smart locks get smarter. The CL4510 lock offers the Codelocks smart lock features but in a smaller, sleeker model.

Utilising Codelocks NetCode technology, the locks offer flexibility and convenience that enable businesses to recognise new levels of convenient access control without compromising on security.

To find out more about our products please contact us at:

[sales@codelocks.com](mailto:sales@codelocks.com)  
[www.codelocks.com](http://www.codelocks.com)

**CODELOCKS**  
control + convenience